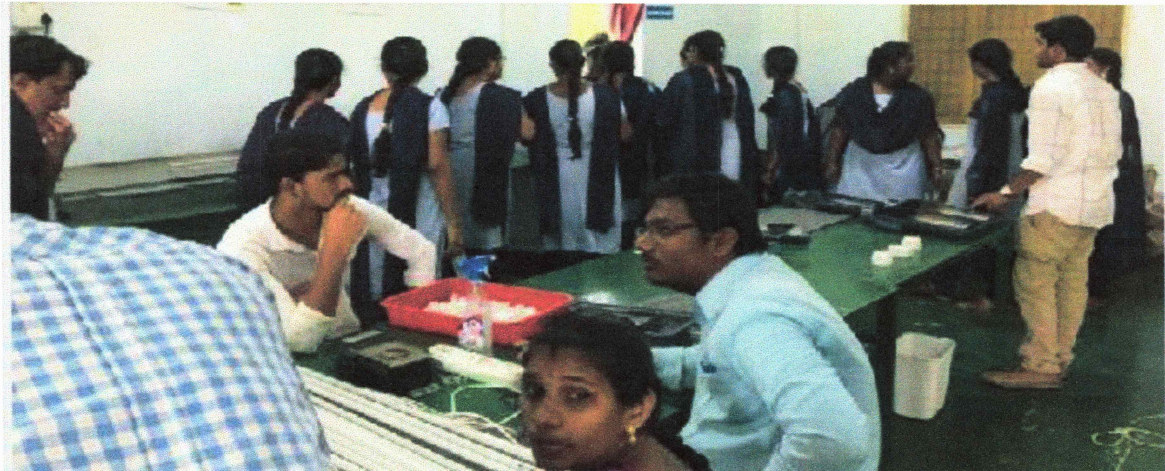




Inquiry based activities dealing with unstructured problems – ECE Dept.



Case study – Dept. of IT

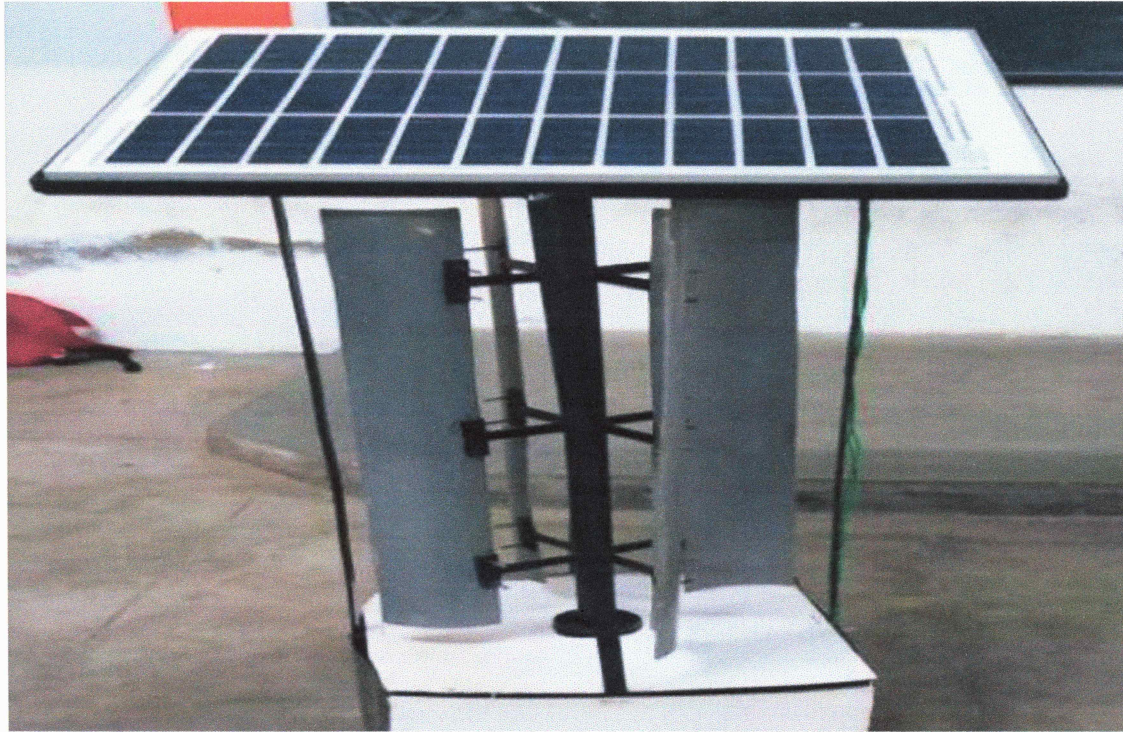


Collaborative Learning – Dept of MECH

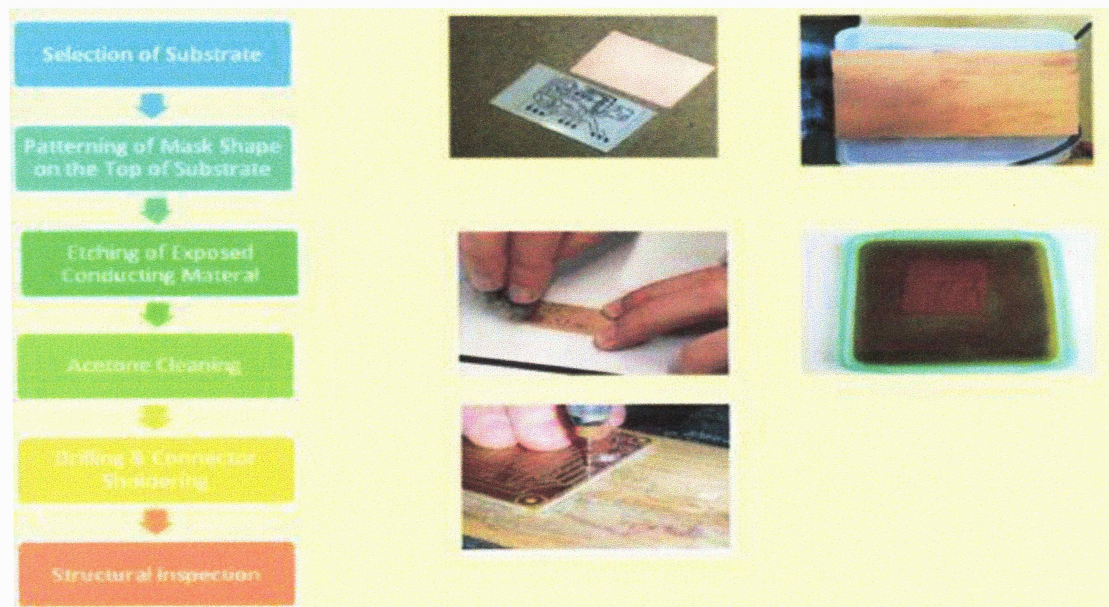




Developing Models by students of EEE on Solar – Wind Hybrid Model



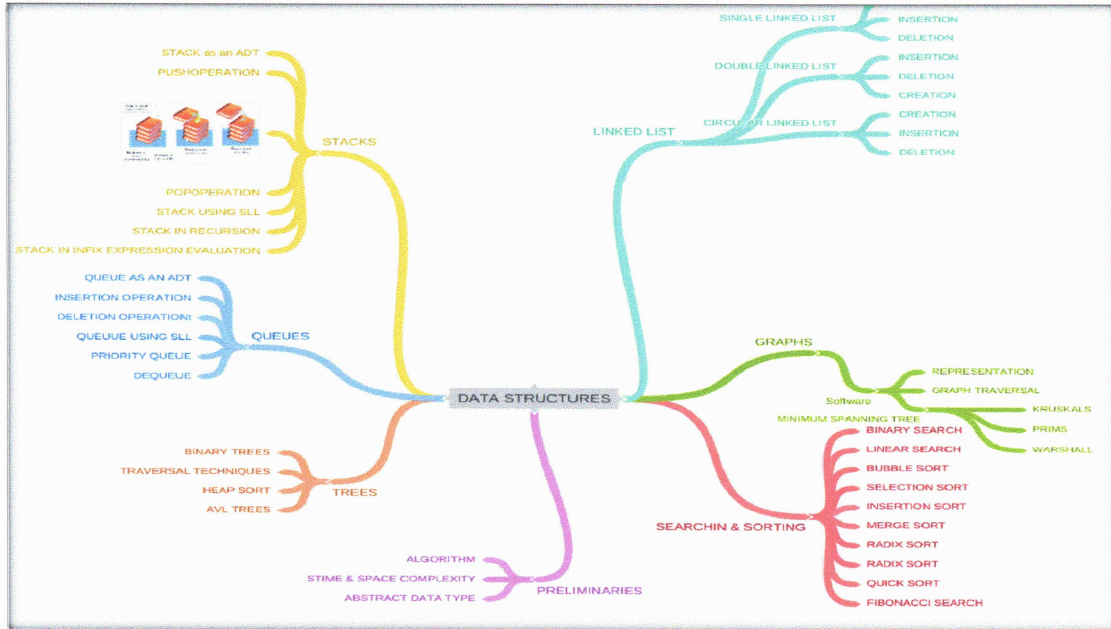
Logical analysis through- Microstrip antenna which is used to design and fabricate different Printed circuit boards – Dept of ECE.



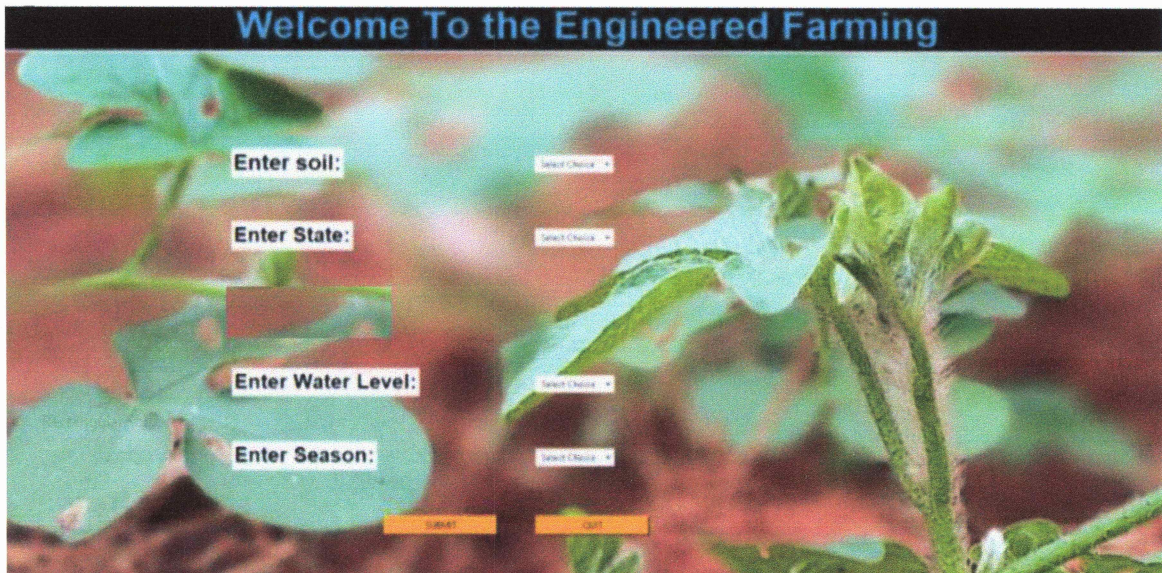
Ashu
PRINCIPAL
ANDHRA LOYOLA INSTITUTE OF
ENGINEERING & TECHNOLOGY
VIJAYAWADA-520 008



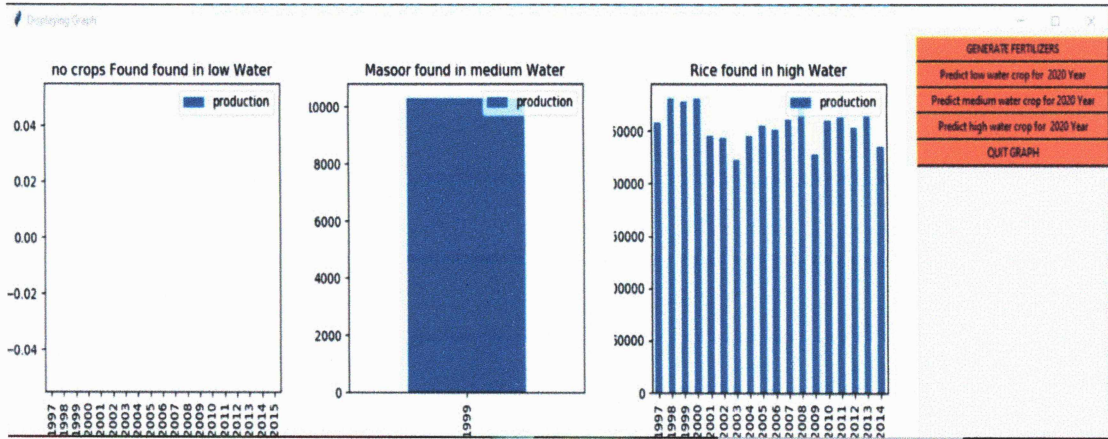
Mind Mapping is a technique used for an overview of a topic or a concept to be learned.



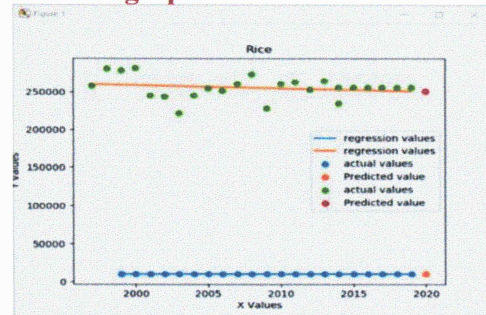
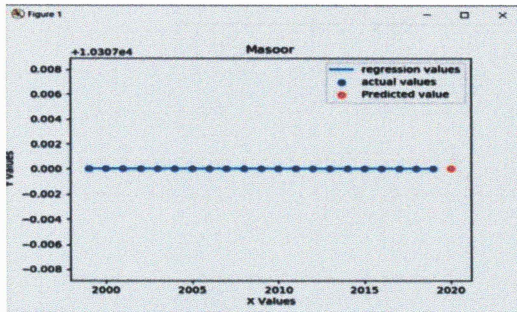
Data Mining - Techniques are used as problem solving technique by the students in carrying out their main projects.




[Signature]
PRINCIPAL
ANDHRA LOYOLA INSTITUTE OF
ENGINEERING & TECHNOLOGY
VIJAYAWADA-520 008



Analysis of Crop Production in graph




 PRINCIPAL
 ANDHRA LOYOLA INSTITUTE OF
 ENGINEERING & TECHNOLOGY
 VIJAYAWADA-520 008